



**"Seeking a life changing answer. I can't remember a time where the answer was spoken so clearly."
Ministry Leader in Transition**

DECEMBER 2022 NEWS

**Dear Friends and Partners of Shepherd's Refuge,
Wow, what a reward! Look what your partnership with us has brought forth!**

"You know, I came here to fast and pray regarding vision and strategy for ministry for the upcoming year, but the Lord had other plans, and wanted me to look at my marriage, because my ministry doesn't matter if my ministry to my wife isn't healthy."

Those seeking the Lord need to be open to receive what His plans are rather than the ones expected!

Throughout the year we have listened to many who are in transition, seeking renewed vision for their ministry. The Lord has been faithfully providing answers, some instantly, and others over time.

Thank you for your continued prayer and financial support! You make it possible for us to serve ministry leaders in their time of need at no charge. We are grateful.

Ruedi & Sandy, Hosts

Jesus said:

"Ask, and it will be given to you; seek, and you will find; knock, and it will be opened to you. ."

- Matthew 7:7

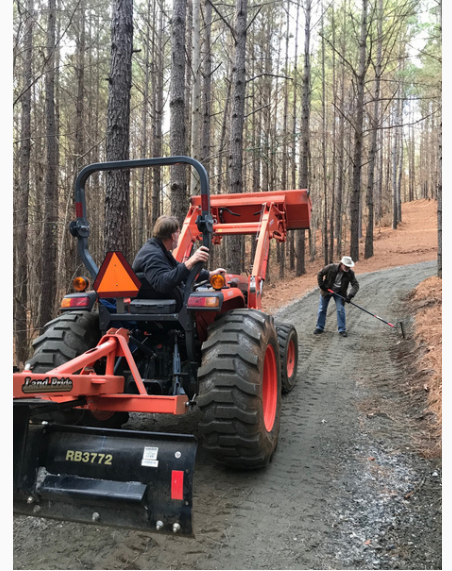


Shepherd's Refuge is a non-profit organization that enables front line servants of the Lord to get refreshed and restored in their relationship with the Heavenly Father in order to return as leaders to their flock. Your support allows us to offer retreats at no cost to pastors and front line ministry workers. Thank you for praying and giving generously.

WORK IS NEVER FINISHED



The gravel road from the Lodge to the cabins has shown wear and tear. A truck load of gravel with a spreader truck, tractor, shovel and rake work repaired it for traffic during the winter months!



REOPEN TO THE WORLD

With some of the travel restrictions lifted, we have been able to host pastors and missionaries from Europe, Africa, Middle East and Far East!

CAREGIVERS FORUM

For those who cannot find suitable dates, check out like-minded ministries in the

CareGivers Directory at
www.caregiversforum.org



RESERVATIONS

Having reached capacity, our board has decided to create more space by limiting the maximum stay to 7 nights and only allow one visit in a 12 month period. All this with exceptions that can be applied for during the reservation process.

It also made an adjustment to the Refundable Reservation Deposit amount.

We are grateful for all that you have done and that you continue to stand with us as we move forward advancing the work of supporting pastors and ministry leadership.



P.O. Box 1221, Dahlonega, GA 30533

ph. 404-474-0686

info@shepherdsrefuge.org

Give online: www.shepherdsrefuge.org

Through resting the Lord showed us how important it is for us to not compromise. As we minister we look forward to challenging the body of Christ in ways that will transform them through the inside out!

Pastors J. and A. F., Leesburg, FL